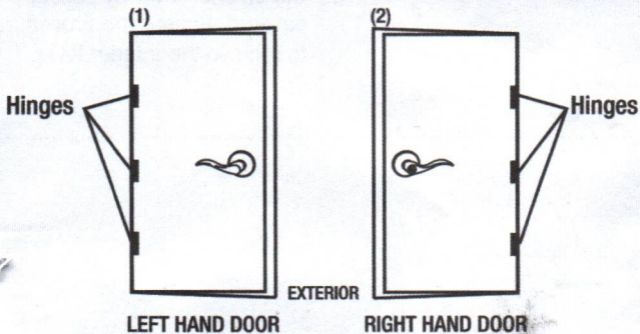


INSTRUCTIONS TO DETERMINE HANDING OF YOUR DOOR

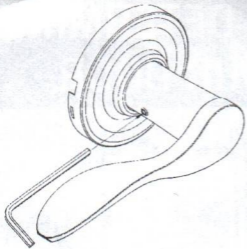


Stand at exterior side and face door.

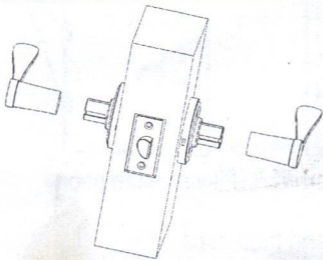
- 1) If hinges are installed on left hand side of door, door is left handed.
- 2) If hinges are installed on right hand side of door, door is right handed.

PRIVACY & PASSAGE

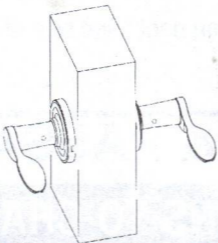
INSTRUCTIONS TO CHANGE HANDING OF LEVER LOCKSETS



- 1) Use Allen Wrench (provided) to release lever from set screw. This will allow you to remove the exterior lever by pulling outward. Repeat the procedure to remove the interior lever.



- 2) Exchange the exterior and interior levers, placing the interior lever on the outside and the exterior lever on the inside.



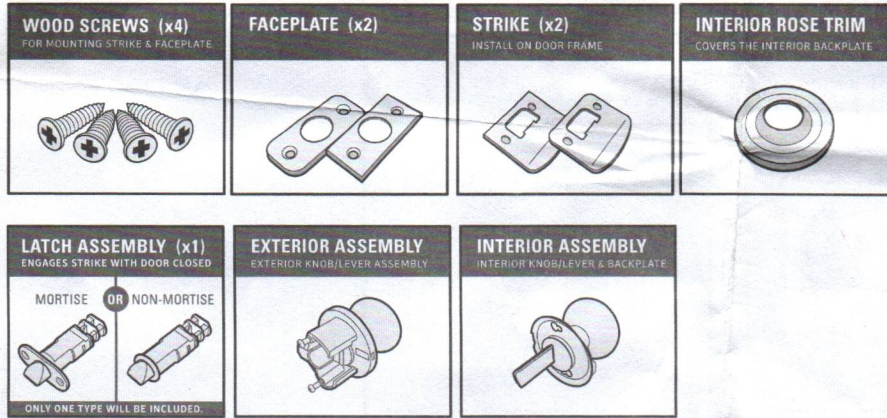
- 3) Secure the levers by using the Allen Wrench to tighten the set screw

INSTRUCTIONS FOR INSTALLING YOUR WESLOCK PRODUCT

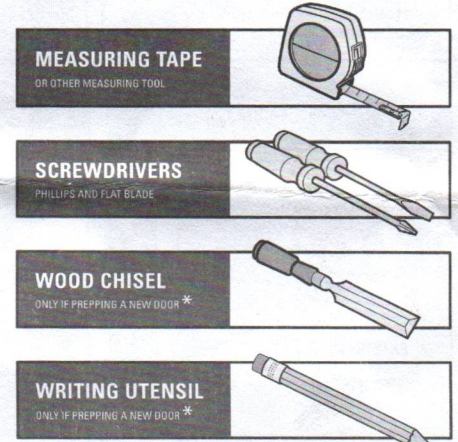
TRADITIONALE COLLECTION :: PASSAGE 600 series

WESLOCK
SINCE 1932

1 CONFIRM THAT ALL PARTS ARE ON HAND



2 REQUIRED TOOLS

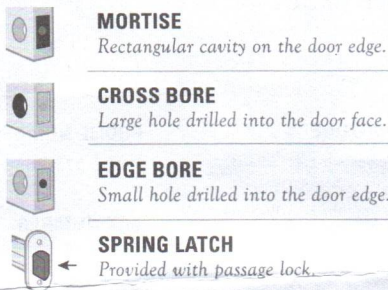


i CONTACT YOUR PRODUCT VENDOR WHEN ORDERING REPLACEMENT HARDWARE.

* DOOR PREP INSTRUCTIONS @ WESLOCK.COM

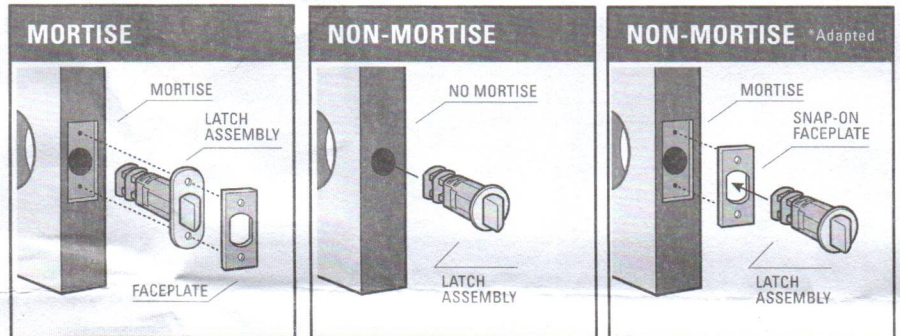
3 GLOSSARY OF TERMS

TECHNICAL LANGUAGE USED IN THIS DOCUMENT



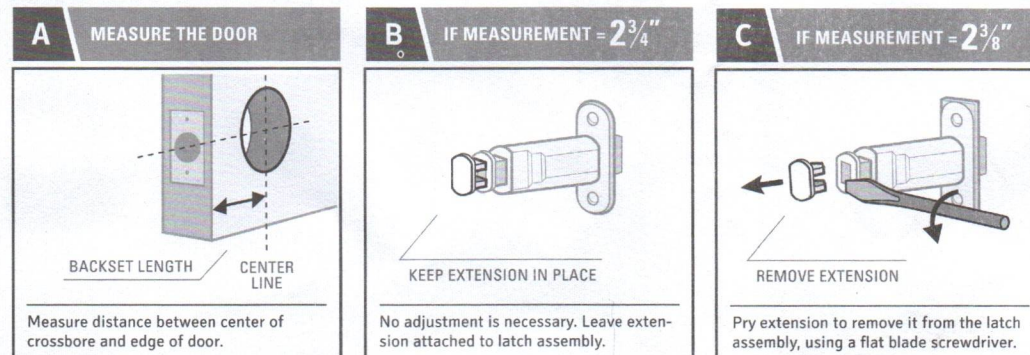
4 IDENTIFY YOUR LATCH TYPE

THIS WILL DETERMINE HOW YOU INSTALL THE LATCH ASSEMBLY



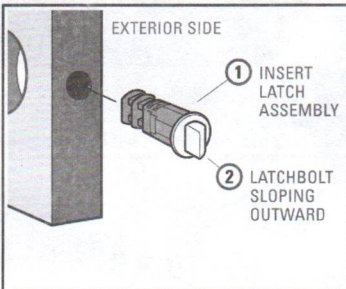
5 DETERMINE YOUR BACKSET

THE LENGTH OF YOUR LATCH ASSEMBLY WILL BE DETERMINED BY YOUR BACKSET MEASUREMENT.



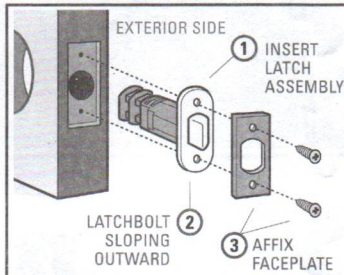
6 INSTALL YOUR PASSAGE HARDWARE

A1 INSERT NON-MORTISE LATCH



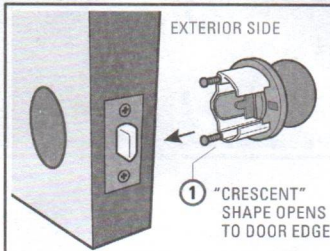
Insert latch assembly into edge bore. Sloping side of latch bolt should face door exterior.

A2 INSERT MORTISE LATCH



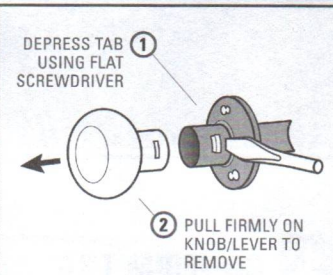
Mortise and Adapted Non-Mortise latches require a faceplate and two wood screws.

B EXTERIOR ASSEMBLY



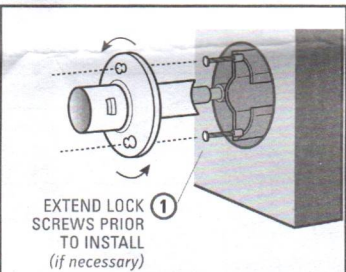
Insert exterior housing into crossbore. The crescent bracket opens toward door edge.

C REMOVE INSIDE KNOB/LEVER



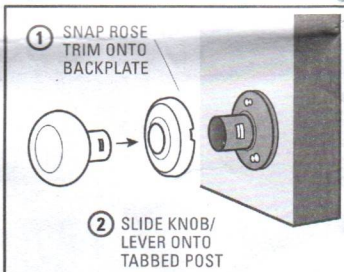
Remove knob/lever to install backplate. To do this, depress tab on post and pull firmly.

D INSTALL BACKPLATE



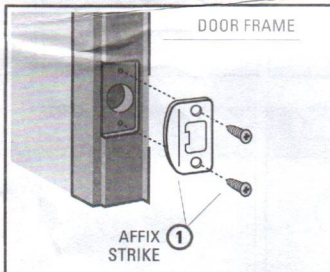
Align slots on escutcheon with screw holes. Align backplate & screw into ext. housing.

E INSTALL TRIM & KNOB/LEVER



Snap rose trim onto backplate. Align slot on knob/lever with tab on post and slide on.

F INSTALL STRIKE



Strike plate is mounted in mortise cavity on door frame using two wood screws.

“Thanks For Choosing Us. We Hope You Enjoy Your New Weslock Door Handle.”

WESLOCK WARRANTY INFORMATION

WESLOCK warrants to the purchaser that the products shall be free from defects in material workmanship for the LIFETIME of the product. Provided the product was purchased from an authorized WESLOCK dealer, Weslock's sole obligation under this warranty shall be to repair or replace product which WESLOCK determines to be defective. After such product is returned to WESLOCK by the purchaser with proof of purchase and with shipping charges prepaid, will this warranty be honored. Homeowner - If the product was installed as original equipment on a new home, you must provide the name of the builder, the date the home was built and your move-in date. If a mechanical defect has occurred, it is your right by this warranty to contact Customer Service in Tulsa, Oklahoma at (800) 575-2658 to arrange the return of the lock. This warranty DOES NOT cover products which malfunction due to improper installation or misuse. **Please register your product at Weslock.com.**

WARRANTY TERMS	FINISH	MECHANICAL
Traditionale Collection	Limited Lifetime	Limited Lifetime

ADDITIONAL CUSTOMER RESOURCES

Online

WEBSITE

For our full product catalog, and video instructions, go to:

🌐 www.weslock.com

TWITTER

To learn about promotions, and other news, follow us at:

🐦 twitter.com/Weslock1

Direct

PHONE NUMBER

1-800-575-2658
BOLT

FAX NUMBER

1-918-294-3869

EMAIL

warranty
@weslock.com